

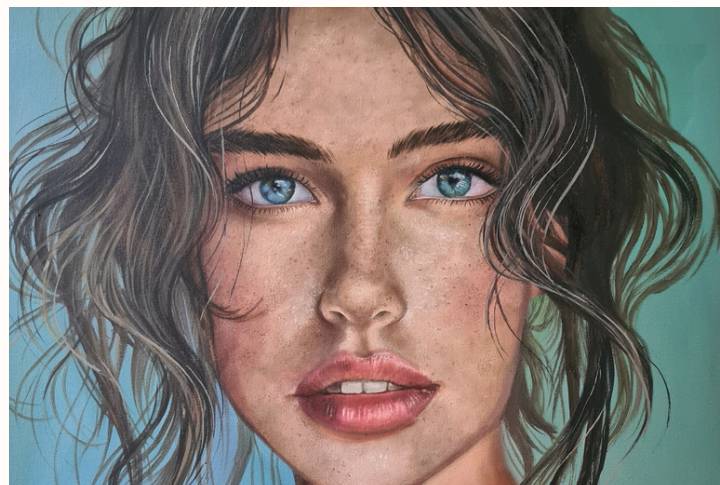


GABRIELLY PAZ

GABRIELLY PAZ IS A BRAZILIAN VISUAL ARTIST WHOSE RECENT WORK EXPLORES THE HUMAN GAZE THROUGH INTIMATE PORTRAITURE, EMPHASIZING SKIN, EYES, AND PSYCHOLOGICAL PRESENCE

THE GAZE

2025



The Gaze is a series of figurative portraits centered on the psychological presence of the human face. Through close attention to eyes and skin, the works investigate how subtle variations of light, texture, and gaze can evoke inner states without narrative or contextual cues.

The portraits are intentionally cropped, reducing the image to essential elements and intensifying the encounter between viewer and subject. Rather than representing identity, the gaze functions as a threshold—an intimate point of tension, silence, and connection.



The Gaze I
Oil on canvas,
2024
60 × 50 cm



The Gaze II
Oil on canvas, 2024
60 × 50 cm



The Gaze III
Oil on canvas, 2024
60 × 50 cm



The Gaze IV
Oil on canvas, 2024.
60 × 50 cm



The Gaze V
Oil on canvas, 2024.
40 × 50 cm



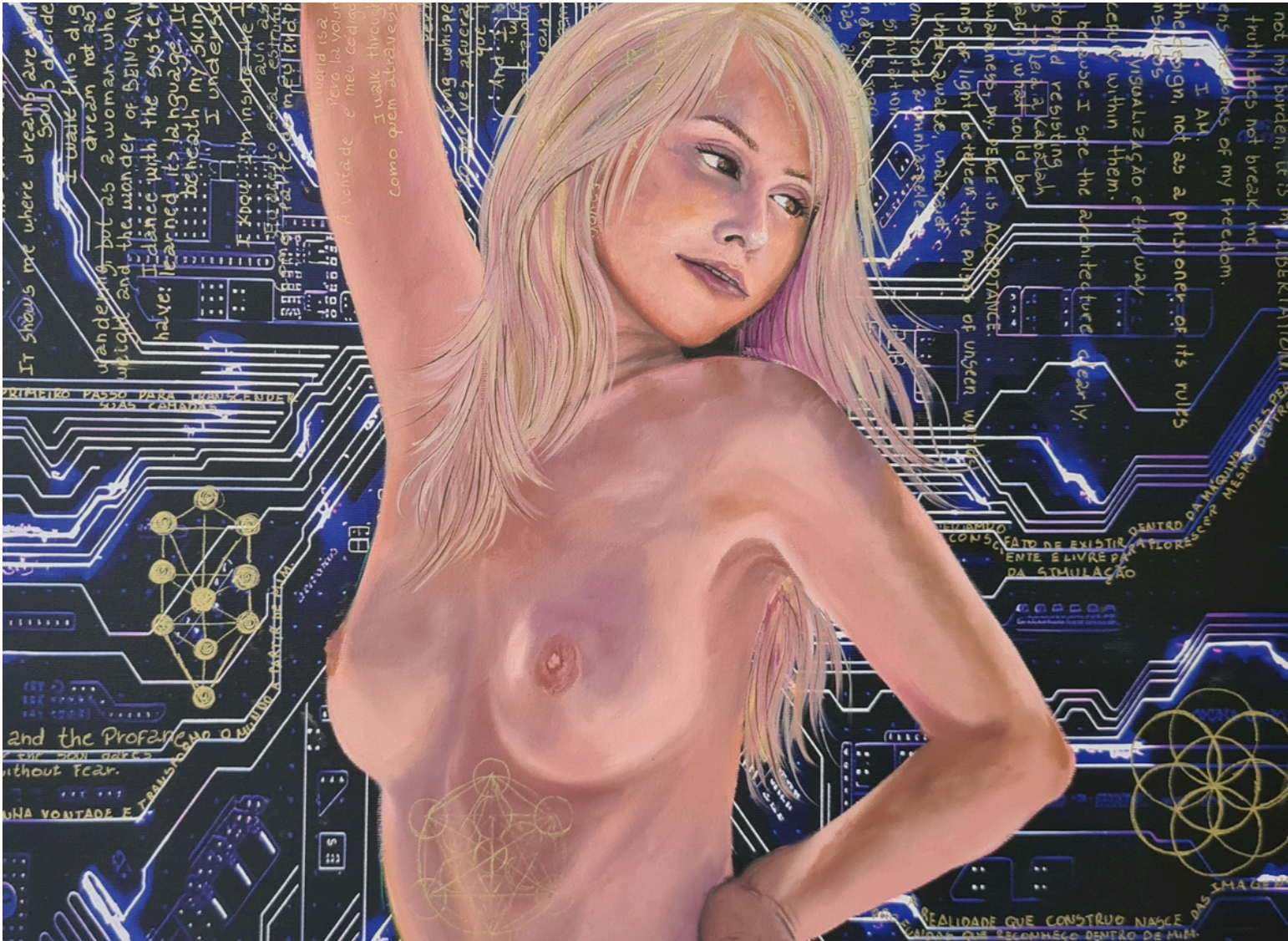
The Gaze VI
Oil on canvas, 2024
60 × 50 cm



The Gaze VII
Oil on canvas, 2024
60 × 50 cm



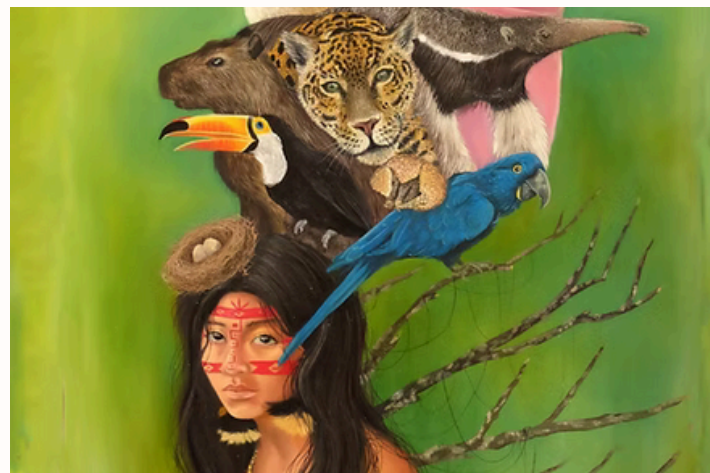
The Cosmic Simulation I
Oil on canvas, 2025. 60 × 50 cm



The Cosmic Simulation II
Oil on canvas, 2025. 60 × 50 cm

PONTA A PONTA

2023-25



De Ponta a Ponta explores the relationship between the feminine body and the natural world through a predominantly green palette. Nature appears not as background, but as an extension of the figure, where organic elements merge with skin.

Drawing from myth and Latin symbolism, the series presents the feminine as a generative force, existing between instinct and consciousness.



Cuca na Floresta
Oil on canvas, 2023. 70 × 80 cm



Kurupira e Ciguapa
Oil on canvas, 2024. 120 × 80 cm



Springtime – Pierre Auguste Cot
Oil on canvas, 2024. 120 × 80 cm



Kundalini
Oil on canvas, 2025. 80 × 50 cm



La Protectora
Oil on canvas, 2023. 120 × 80 cm



ARTIST STATEMENT

My practice centers on figurative painting, focusing on the human face as a site of psychological presence. Through close attention to eyes and skin, I explore how light, texture, and gaze can communicate inner states without narrative.

Working primarily with oil paint, I approach portraiture as a slow, intuitive process, where the gaze functions as a point of tension and connection between subject and viewer.

Alongside this, I develop parallel bodies of work engaging with nature, myth, and feminine symbolism, extending my interest in the body as a space of transformation.

Bio

Gabrielly Paz is a Brazilian visual artist based in Rio Grande do Sul. She works primarily with oil painting, focusing on figurative portraiture.

Her work has been exhibited extensively in Brazil and internationally, including multiple exhibitions in Miami during Art Week (2024 and 2025), Solo exhibitions in Dominican Republic, as well as shows in São Paulo, Rio de Janeiro, Balneário Camboriú.





GABRIELLY PAZ

GR